

LED STREET LIGHT

INSTALLATION GUIDE

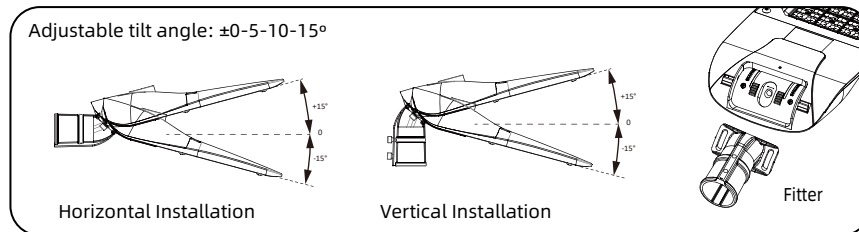
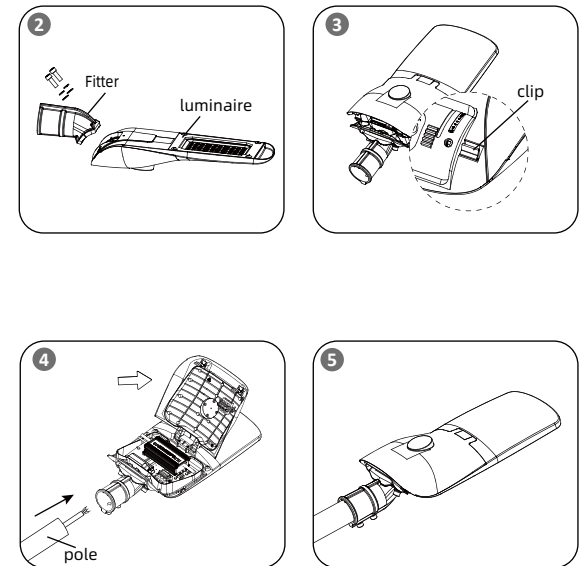


VOLTAGE	AC 100-240V / 277V
PROTECTION CLASS	Class I (Default) / Class II
POWER FACTOR	>0.95
OPERATING TEMP	-40°C ~ +50°C
OPTICS	Type II, Type III, Asymmetric for pedestrian crossings
HOUSING	High pressure die-cast aluminum
HOUSING COLOR	Gray (Default) / Others (available on request)
MOUNTING	Side entry or Vertical pole mounted
IP RATING	IP66
IK RATING	IK10
Lifespan L70 at 25 °C	>100,000 h
MAX MOUNTED HEIGHT	15m
WARRANTY	5 years

Version	Nominal Wattage W	Fixture Dimension mm	Fixture Weight kg	Packing Type units /ctn	EPA m²
S	30 / 50 / 60	544 x264 x132	4.0(±0.1)	1	0.172
M	80 / 100	609 x264 x132	4.4(±0.1)	1	0.193
L	100 / 120 / 150	675 x317 x132	6.0(±0.1)	1	0.257
XL	150 / 180 / 200	727 x317 x132	6.8(±0.1)	1	0.277

INSTALLATION & CONNECTION INSTRUCTIONS

- STEP 1: Open the package and check the product. In case of any damage, contact us.
- STEP 2: Fasten the fitter onto street light with screws provided and adjust the fitter in the desired tilt angle.
- STEP 3: Push the clips to open the cover of driver box, Insert the pole and external power cord into the luminaire. Tighten the M16 connector.
- STEP 4: Connect the cable to Knife switch or terminal block, Be sure to connect the cable correctly. Brown-Live, Blue- Neutral, Yellow/Green-Ground(Class II version only). Fix the luminaire and pole by allen wrench.
- STEP 5: Close the cover. Switch the power on and check to see that the street light works properly.
- Recommended torque: 17Nm ± 1Nm



CAUTION

- Installation and maintenance must be performed by professionals only.
- Please ensure the pole is strong enough and the screws are tightened.
- The ground wire must be securely connected (Class I version only).
- Please make sure the lamp is working with correct input voltage.
- Cut off the power before maintenance.
- Do not use chemicals or corrosive cleaner to clean the fixture.
- If the external flexible cable or cord of this luminaire is damaged, it shall be exclusively replaced by qualified person in order to avoid a hazard.